



Client Resources

Here are just a few examples of some client resources you can utilize. You can also find some local resources or other products to assist in your support efforts.

Bereavement Support

- **Lap of Love: Pet Loss and Bereavement Resource Line**

Call 855-351-LOVE (5683) Monday - Friday. The resource line is a complimentary national hotline available to those that are anticipating or grieving the loss of their cat.

- **AVMA Compiled Pet Loss Support Grief Counseling**

- Chicago VMA - chicagovma.org; Phone: 630-325-1600
- Cornell University – vet.cornell.edu; Phone: 607-253-3932
- University of Illinois – vetmed.illinois.edu; Phone: 217-244-CARE (2273) or 877-394-CARE (2273)
- Michigan State University – cvm.msu.edu; Phone: 517-432-2696
- P&G Pet Care, Pet Loss Support Hotline – Phone: 888-332-7738
- University of Pennsylvania – vet.upenn.edu; Phone 215-898-4556
- University of Tennessee – vet.utk.edu/socialwork; Phone: 865-755-8839
- Tufts University – vet.tufts.edu/petloss; Phone: 508-839-7966
- Virginia-Maryland Regional College of Veterinary Medicine – vetmed.vt.edu; Phone: 540-231-8038
- Washington State University – vetmed.wsu.edu; Phone: 509-335-5704 or 866-266-8635

- **The Association for Pet Loss and Bereavement**

- Pet Loss and Anticipatory Bereavement Chat – aplb.org/chat-2/
- Directory of Pet Loss Support Groups – aplb.org/support/pet-loss-support-groups/

Children's Reading List

- Meng, Cece, and Jago. *Always Remember*. Illustrated, Philomel Books, 2016.
- Poll, Van Wendy. *Healing A Child's Pet Loss Grief: A Guide for Parents*. Center for Pet Loss Grief, LLC, 2016.
- Potter, Shirl, and Koss, George. *Death of a Pet: Answers to Questions for Children and Animal Lovers of All Ages*. Guideline Publications, 1991.
- Rigabar, Barbara Bareis, and Chris Sharp. *A Rainbow Bridge for Gus: A Story about the Loss of a Pet*. Barb Rigabar, 2014.
- Rylant, Cynthia. *Cat Heaven*. Illustrated, Blue Sky Press, 1997.
- Tousley, Marty. *Children and Pet Loss: A Guide for Helping*. 1st ed., Our Pals Pub, 1996.

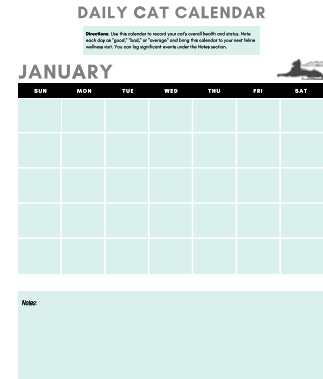


Client Resources continued

Free-to-Print Resources

Daily Cat Calendar

Clients can download and print this 12-month calendar to record their cat's ongoing health and status. They can note each day as "good," "bad," or "average" and bring this calendar to their next feline wellness visit. Notable or significant events can be recorded in the "Notes" section beneath the calendar.



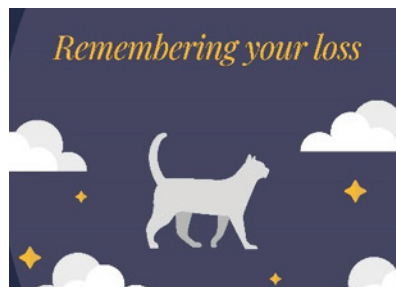
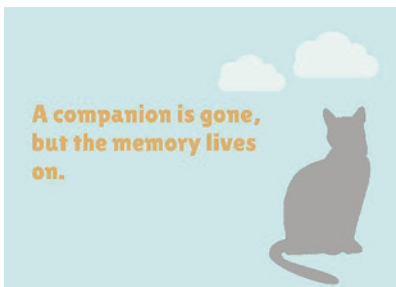
Lobby Sign

Print and display this sign in your lobby to inform other clients that a euthanasia procedure is occurring.



Customizable Sympathy & Anniversary Cards

All cards are provided as an editable PDF to personalize and use at your practice. Each card is formatted for A4-size paper sheets in landscape orientation.



DAILY CAT CALENDAR

Directions: Use this calendar to record your cat's overall health and status. Note each day as "good," "bad," or "average" and bring this calendar to your next feline wellness visit. You can log significant events under the Notes section.



JANUARY

SUN	MON	TUE	WED	THU	FRI	SAT

Notes:

A large, empty light teal rectangular area provided for writing notes, located below the calendar grid.

DAILY CAT CALENDAR

Directions: Use this calendar to record your cat's overall health and status. Note each day as "good," "bad," or "average" and bring this calendar to your next feline wellness visit. You can log significant events under the Notes section.



FEBRUARY

SUN	MON	TUE	WED	THU	FRI	SAT

Notes:

A large, empty light teal rectangular area provided for writing notes, located below the calendar grid.

DAILY CAT CALENDAR

Directions: Use this calendar to record your cat's overall health and status. Note each day as "good," "bad," or "average" and bring this calendar to your next feline wellness visit. You can log significant events under the Notes section.

MARCH



SUN	MON	TUE	WED	THU	FRI	SAT

Notes:

A large, empty light teal rectangular area provided for writing notes.

DAILY CAT CALENDAR

Directions: Use this calendar to record your cat's overall health and status. Note each day as "good," "bad," or "average" and bring this calendar to your next feline wellness visit. You can log significant events under the Notes section.

APRIL



SUN	MON	TUE	WED	THU	FRI	SAT

Notes:

A large, empty light teal rectangular area provided for writing notes, spanning the width of the page below the calendar grid.

DAILY CAT CALENDAR

Directions: Use this calendar to record your cat's overall health and status. Note each day as "good," "bad," or "average" and bring this calendar to your next feline wellness visit. You can log significant events under the Notes section.

MAY



SUN	MON	TUE	WED	THU	FRI	SAT

Notes:

A large, empty light teal rectangular area provided for writing notes.

DAILY CAT CALENDAR

Directions: Use this calendar to record your cat's overall health and status. Note each day as "good," "bad," or "average" and bring this calendar to your next feline wellness visit. You can log significant events under the Notes section.

JUNE



SUN	MON	TUE	WED	THU	FRI	SAT

Notes:

A large, empty light teal rectangular area provided for writing notes.

DAILY CAT CALENDAR

Directions: Use this calendar to record your cat's overall health and status. Note each day as "good," "bad," or "average" and bring this calendar to your next feline wellness visit. You can log significant events under the Notes section.

JULY



SUN	MON	TUE	WED	THU	FRI	SAT

Notes:

A large, empty rectangular area with a light teal background, intended for writing notes.

DAILY CAT CALENDAR

Directions: Use this calendar to record your cat's overall health and status. Note each day as "good," "bad," or "average" and bring this calendar to your next feline wellness visit. You can log significant events under the Notes section.

AUGUST



SUN	MON	TUE	WED	THU	FRI	SAT

Notes:

A large, empty light teal rectangular area provided for writing notes, spanning the width of the page below the calendar grid.

DAILY CAT CALENDAR

Directions: Use this calendar to record your cat's overall health and status. Note each day as "good," "bad," or "average" and bring this calendar to your next feline wellness visit. You can log significant events under the Notes section.

SEPTEMBER



SUN	MON	TUE	WED	THU	FRI	SAT

Notes:

A large, empty light teal rectangular area provided for writing notes.

DAILY CAT CALENDAR

Directions: Use this calendar to record your cat's overall health and status. Note each day as "good," "bad," or "average" and bring this calendar to your next feline wellness visit. You can log significant events under the Notes section.



OCTOBER

SUN	MON	TUE	WED	THU	FRI	SAT

Notes:

A large, empty light teal rectangular area provided for writing notes, located below the calendar grid.

DAILY CAT CALENDAR

Directions: Use this calendar to record your cat's overall health and status. Note each day as "good," "bad," or "average" and bring this calendar to your next feline wellness visit. You can log significant events under the Notes section.



NOVEMBER

SUN	MON	TUE	WED	THU	FRI	SAT

Notes:

A large, empty light teal rectangular area provided for writing notes, located below the calendar grid.

DAILY CAT CALENDAR

Directions: Use this calendar to record your cat's overall health and status. Note each day as "good," "bad," or "average" and bring this calendar to your next feline wellness visit. You can log significant events under the Notes section.



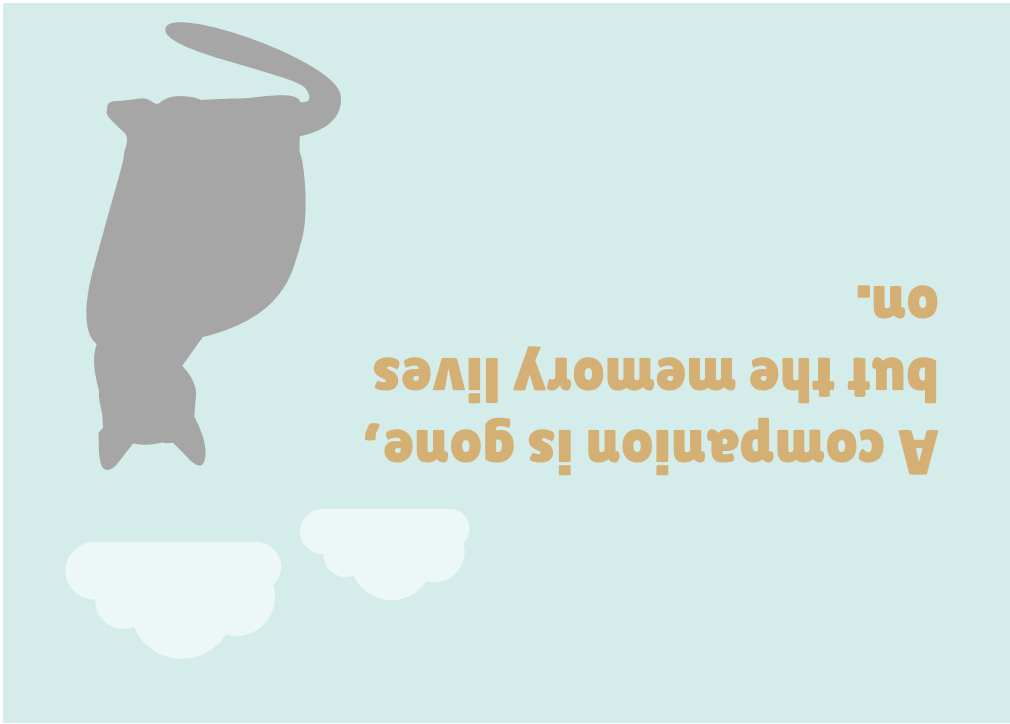
DECEMBER

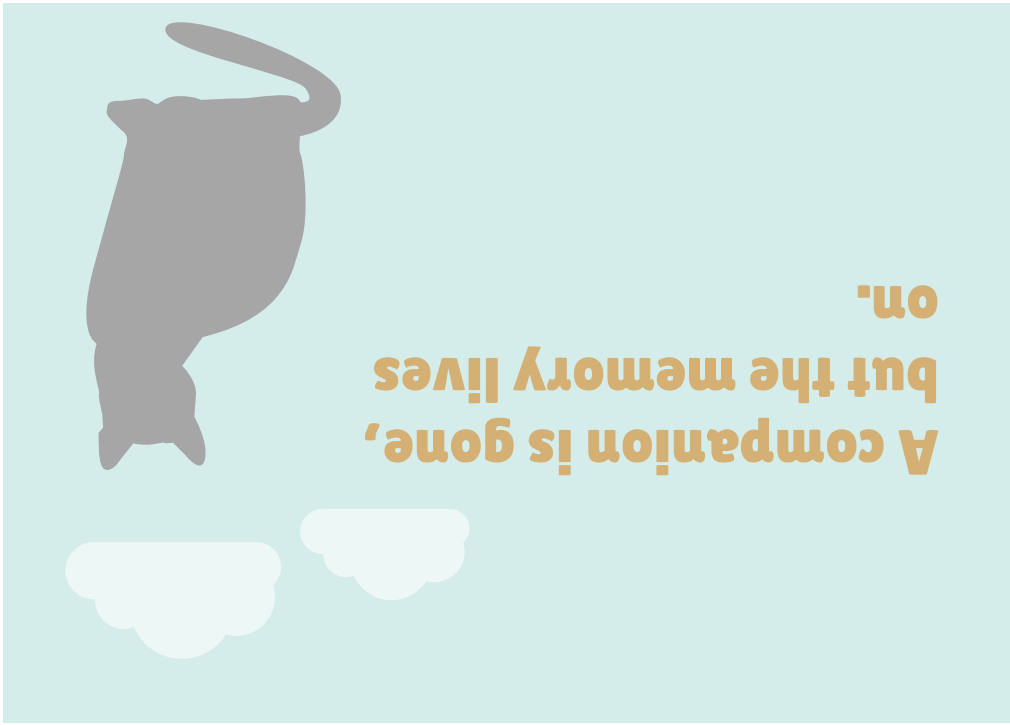
SUN	MON	TUE	WED	THU	FRI	SAT

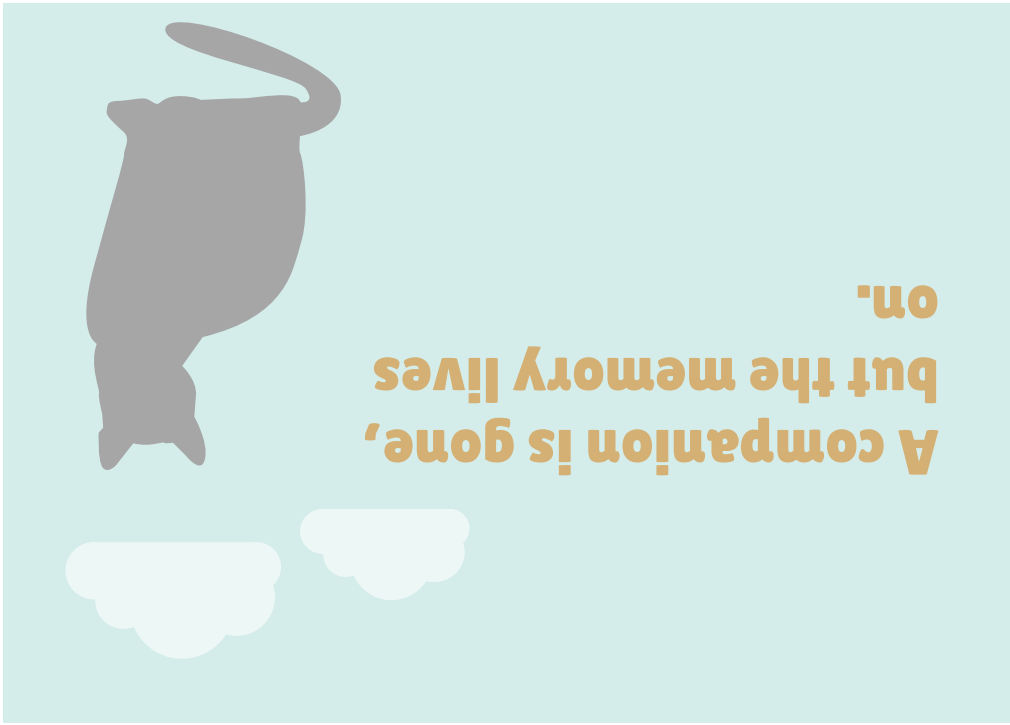
Notes:

A large, empty light teal rectangular area provided for writing notes, located below the calendar grid.













Sometimes a very special cat enters our lives, and their presence changes our hearts forever.

May your wonderful memories comfort you and bring you peace.

Warmest Regards,