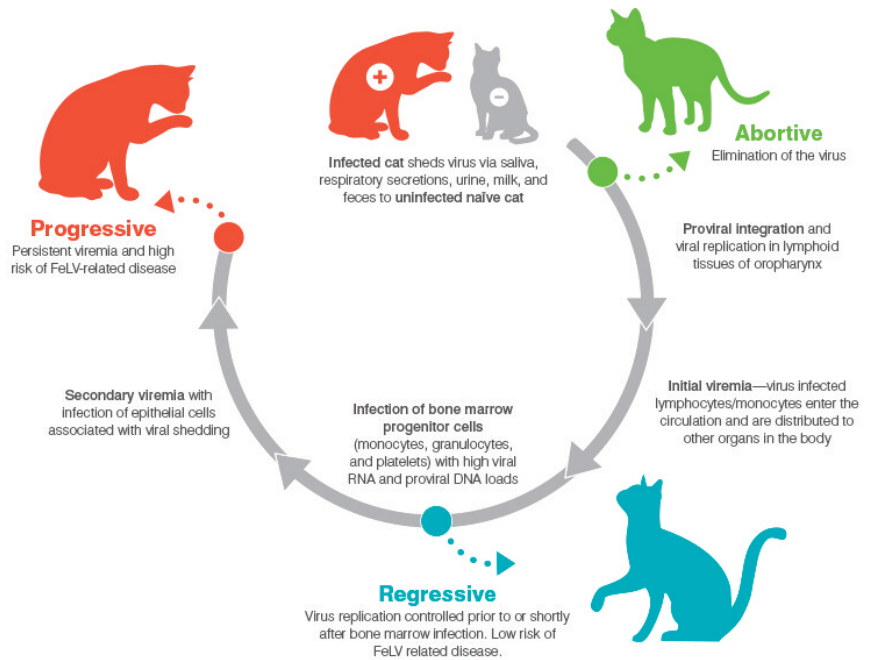


## Transmission

### FeLV Transmission Principles

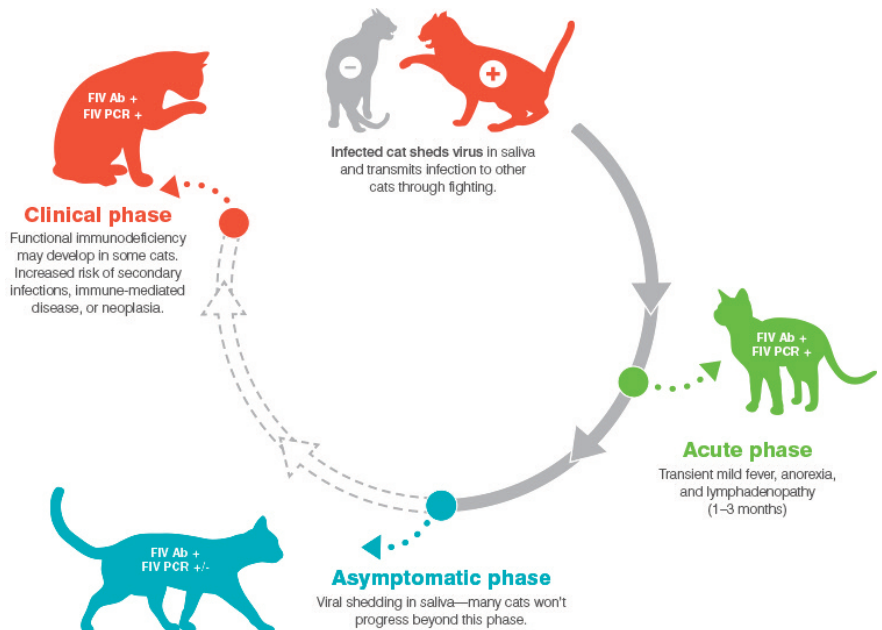
- Infected cats may begin to shed virus within 30 days of exposure
- Shed in saliva
- Less commonly shed in nasal secretions, milk, urine, or feces
- Transmitted mainly via oral nasal route and less commonly via bite wounds
- Spread **horizontally** among cats that live together or fight
- Spread **horizontally and vertically** from infected queens to their kittens
- Kittens more susceptible to becoming progressively infected than adult cats



Courtesy of IDEXX. Copyright © 2020, IDEXX Laboratories, Inc. All rights reserved. Used with permission. Reference: Hartmann, K., *Clinical Aspects of Feline Retroviruses: A Review*, *Viruses* 2012 Oct., 4, 2684-271.

### FIV Transmission Principles

- Infected cats may begin to shed virus within 14 days of exposure
- Shed in saliva
- Spread **horizontally** via bite wounds and FIV-infected white blood cells
- Transmission from queens to kittens is uncommon in natural infection
- Transmission between cohabitating cats is uncommon without fighting
- Sexual transmission is uncommon



Courtesy of IDEXX. Copyright © 2018, IDEXX Laboratories, Inc. All rights reserved. Used with permission. Reference: Hosie MJ, Addie D, Belák S, Boucraut-Baralon C, Egberink H, Frymus T, Gruffydd-Jones T, Hartmann K, Lloret A, Lutz H, Marsilio F, Pennisi MG, Radford AD, Thiry E, Truyen U, Horzinek MC. *Feline immunodeficiency. ABCD guidelines on prevention and management. J Feline Med Surg.* 2009 Jul;11(7):575-84.